

SHURflo's REMOTE SOLUTION

Model 9300 Series

SUBMERSIBLE PUMP APPLICATIONS:

- Irrigation
- Livestock Watering
- Remote Homes & Cabins
- Ponds
- Islands



SHURflo's NEW
"Watertite-Gland" Design PAT. PEND.

SHURflo's NEW 9300 Series Solar-Powered Submersible Pump. Rugged, Durable . . . and Built to Last!

SHURflo's 9300 Series Pumps are backed by 25 years of research and engineering experience. Designed to be strong and yet lightweight, these pumps are easily repaired in the field. SHURflo provides a wide-range of parts and kits for ease of rebuilding and repair.

"GLAND" CONNECTOR FEATURES:

- Waterblocked Electrical Connector.
- Impervious gland connection design prevents waterwicking. (Pat. Pend.)
- Quick Disconnect — No splicing necessary.
- Accepts a variety of jacketed cables.

9300 SERIES PUMP FEATURES:

- Strong Construction, yet lightweight (6lbs.).
- Corrosion-proof housing with stainless-steel fasteners.
- Dry Running capability without pump damage.
- Internal Bypass Feature for pump protection.
- Long-life, 24 VDC Operation.
- Easily repaired in the field.
- 25 years of manufacturing experience with diaphragm pumps.
- State of the art solid diaphragm.



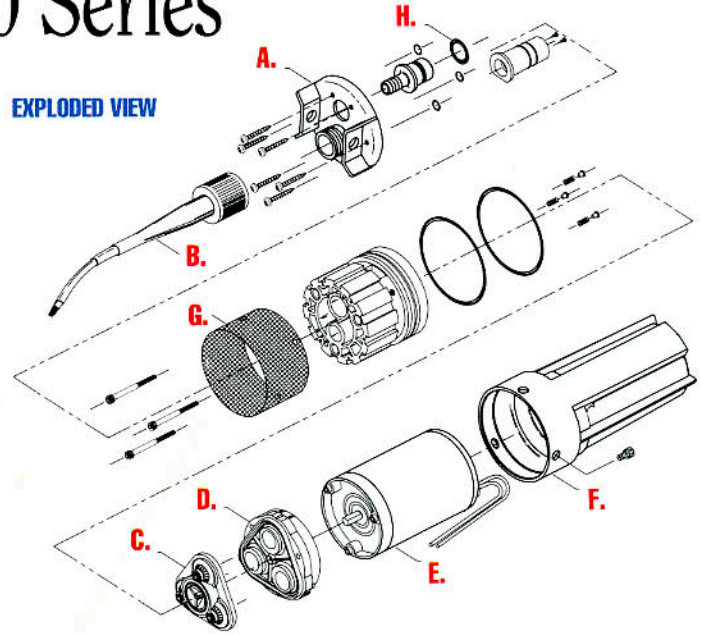
SHURflo®

Model 9300 Series

24 VDC 9300 SUBMERSIBLE PUMP FLOW CHART PRODUCES 820-1170 GALLONS (3110-4428 LITRES) PER DAY

TOTAL VERTICAL LIFT		FLOW RATE PER HOUR		SOLAR ARRAY SIZE MINIMUM TOTAL POWER RATING	CURRENT AMPS
FEET	METERS	GAL.	LTR.	WATTS	
20	6.1	117	443	58	1.5
40	12.2	114	432	65	1.7
60	18.3	109	413	78	2.1
80	24.4	106	401	89	2.4
100	30.5	103	390	99	2.6
120	36.6	101	382	104	2.8
140	42.7	99	375	115	3.1
160	48.8	98	371	123	3.3
180	54.9	93	352	135	3.6
200	61.0	91	345	141	3.8
230	70.1	82	310	155	4.1

NOTE: Use of an LCB (Linear Current Booster) Unit is required for optimum performance. Minimum total power rating shows minimum array watts required to perform as shown.



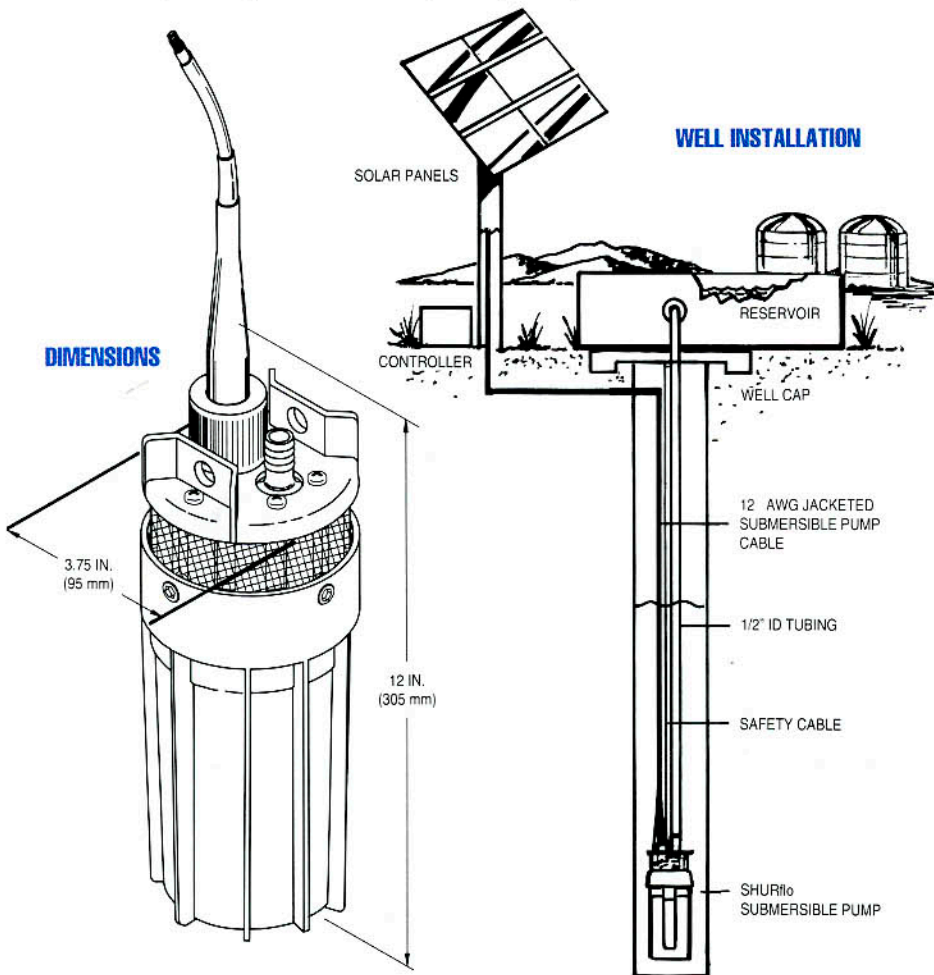
REPLACEMENT PART KITS:

- | | |
|--------------------------------|--------------------------|
| (A) LIFT PLATE | (F) CANISTER KIT |
| (B) CABLE PLUG KIT | (G) FILTER SCREEN KIT |
| (C) VALVE KIT | (H) O-RING KIT |
| (D) LOWER HOUSING ASSEMBLY KIT | (I) TOOL KIT (NOT SHOWN) |
| (E) MOTOR KIT | |

* All kits may consist of more parts than shown in exploded view.

TECHNICAL SPECIFICATIONS:

MODEL NUMBER	9325-043-101
PUMP DESIGN	Positive Displacement 3 Chamber Diaphragm Pump
CAM	3.0 Degree
MOTOR	Permanent Magnet, P/N 11-175-00, Thermally Protected
VOLTAGE	24 VDC Nominal
AMPS	4.0 Maximum
INTERNAL BYPASS	105-110 PSI Max. (7.2-7.5 BARS)
MAXIMUM LIFT	230 Feet Maximum (70 Meters)
MAXIMUM SUBMERSION	100 Feet Maximum (30 Meters)
OUTLET PORT	1/2" (12.7mm) Barbed Fitting for 1/2" (12.7mm) I.D. Tubing
INLET MATERIALS	50 Mesh Stainless Steel Screen High Strength Engineered Plastics, Stainless Steel Fasteners
TYPICAL APPLICATIONS	Potable Water Well Pump
NET WEIGHT	6 LBS. (2.7 Kgs.)



SHURflo EAST

52748 Park Six Court
Elkhart, Indiana 46514-5427
Phone: (800) 762-8094 • (219) 262-0478
FAX: (219) 264-2169

SHURflo HEADQUARTERS

Mailing Address: 12650 Westminster Avenue
Santa Ana, California 92706-2100
Shipping Address: 12650 Westminster Avenue
Garden Grove, California, 92843
Phone: (800) 854-3218 • (714) 554-7709
FAX: (714) 554-4721



(800) 967-6917

www.dcpower-systems.com

www.shurflo.com

